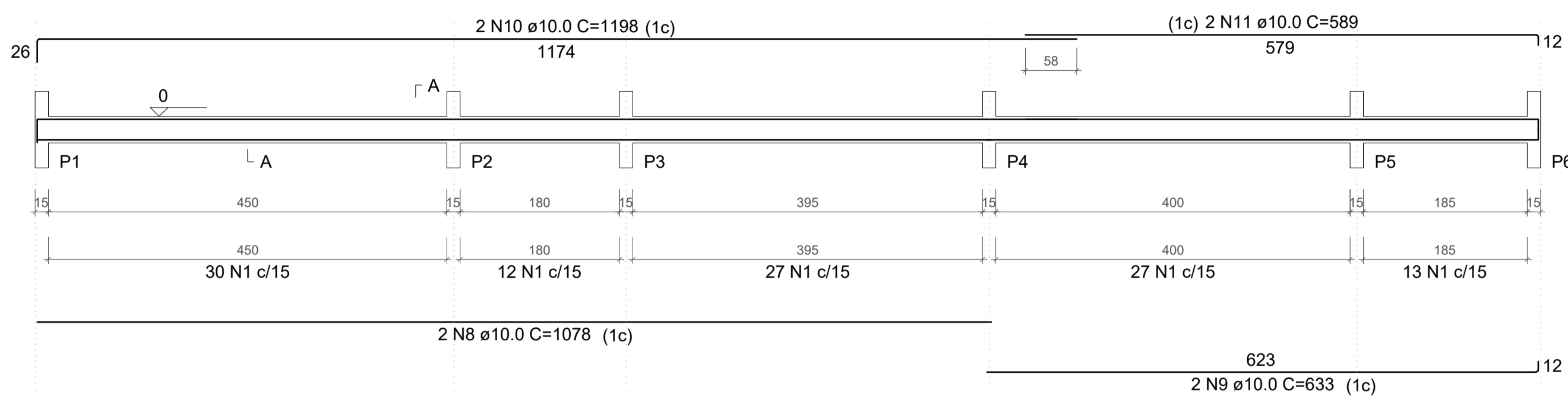
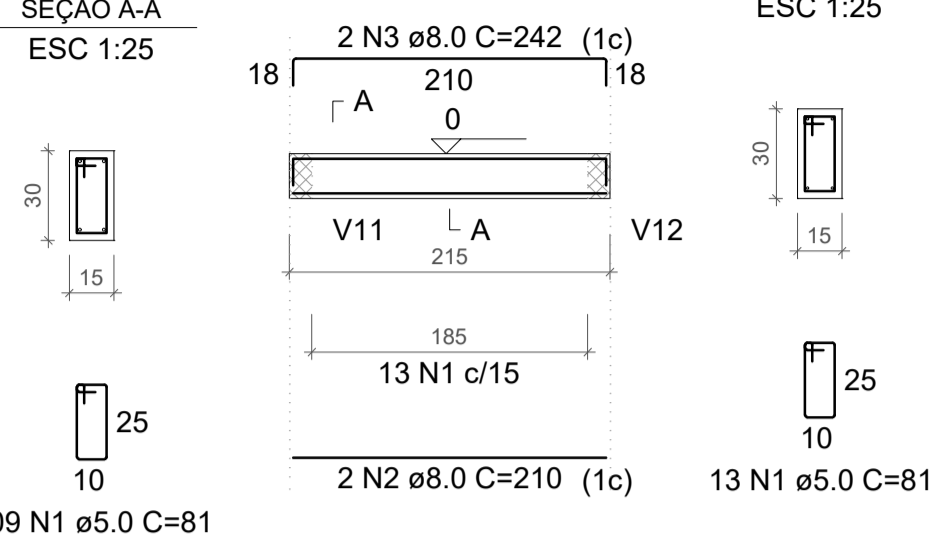


V1
ESC 1:50



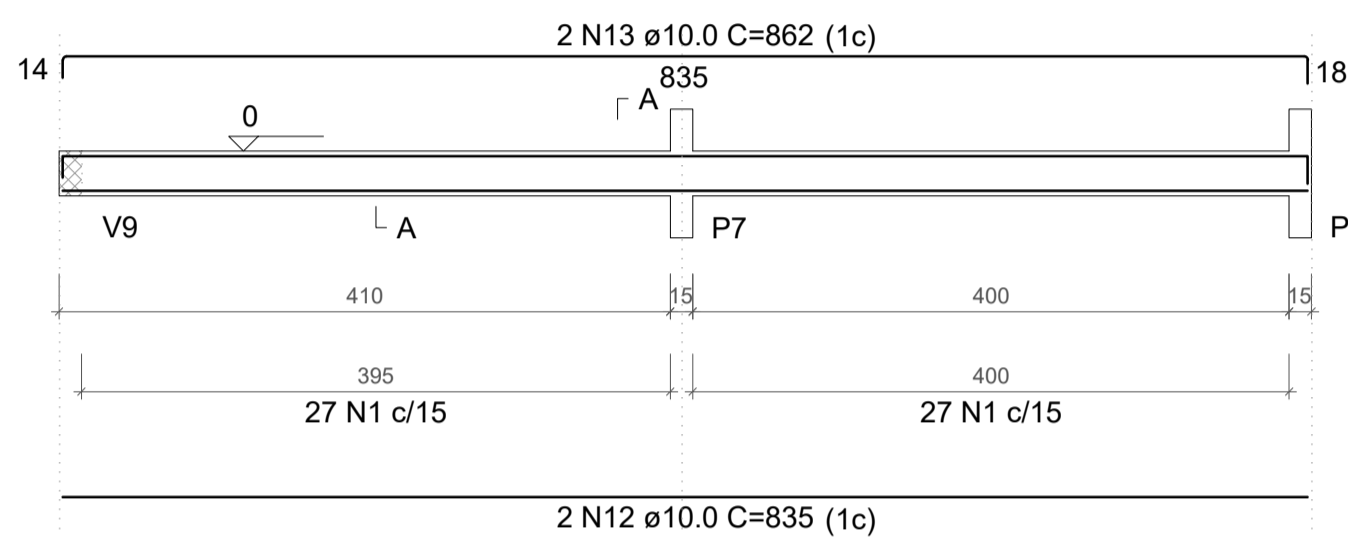
V2
ESC 1:50



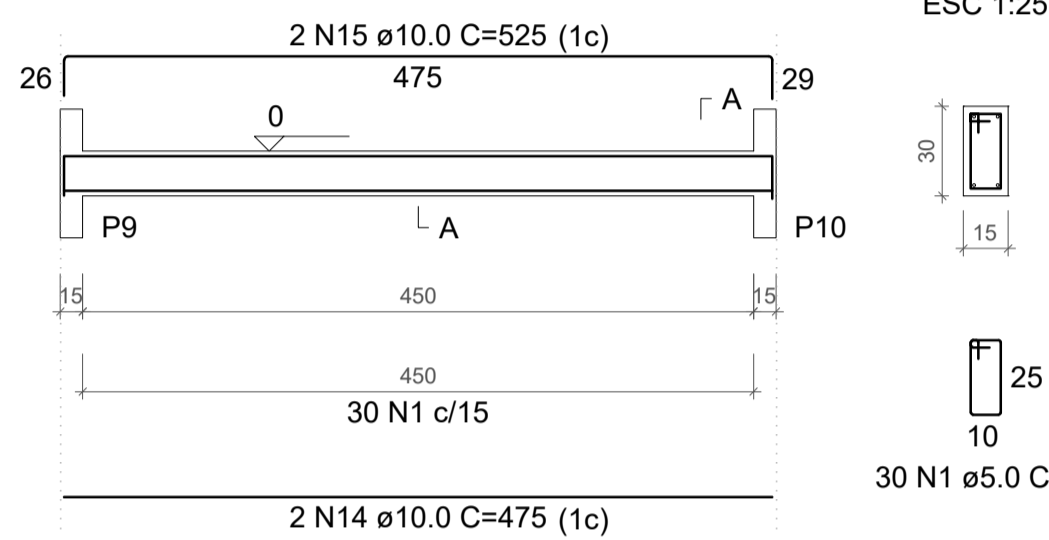
RELAÇÃO DO AÇO

AÇO	N	DIAM (mm)	QUANT	C.UNIT (cm)	C.TOTAL (cm)
CA60	1	5.0	571	81	46251
CA50	2	8.0	2	210	420
	3	8.0	2	242	484
	4	8.0	2	221	442
	5	8.0	2	244	488
	6	8.0	4	795	3180
	7	8.0	4	270	1080
	8	10.0	4	1078	4312
	9	10.0	2	633	1266
	10	10.0	2	1198	2396
	11	10.0	2	589	1178
	12	10.0	2	835	1670
	13	10.0	2	862	1724
	14	10.0	2	475	950
	15	10.0	2	525	1050
	16	10.0	2	623	1246
	17	10.0	1	315	315
	18	10.0	1	794	794
	19	10.0	2	1198	2396
	20	10.0	2	614	1228
	21	10.0	16	795	12720
	22	10.0	1	173	173

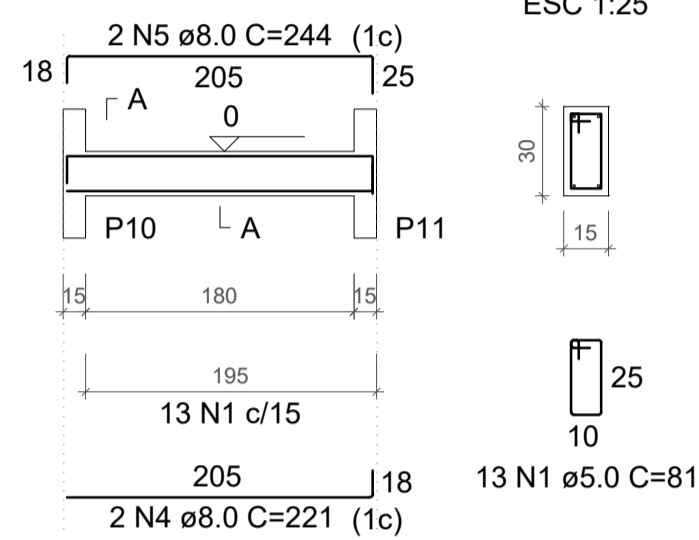
V3
ESC 1:50



V4
ESC 1:50



V5
ESC 1:50

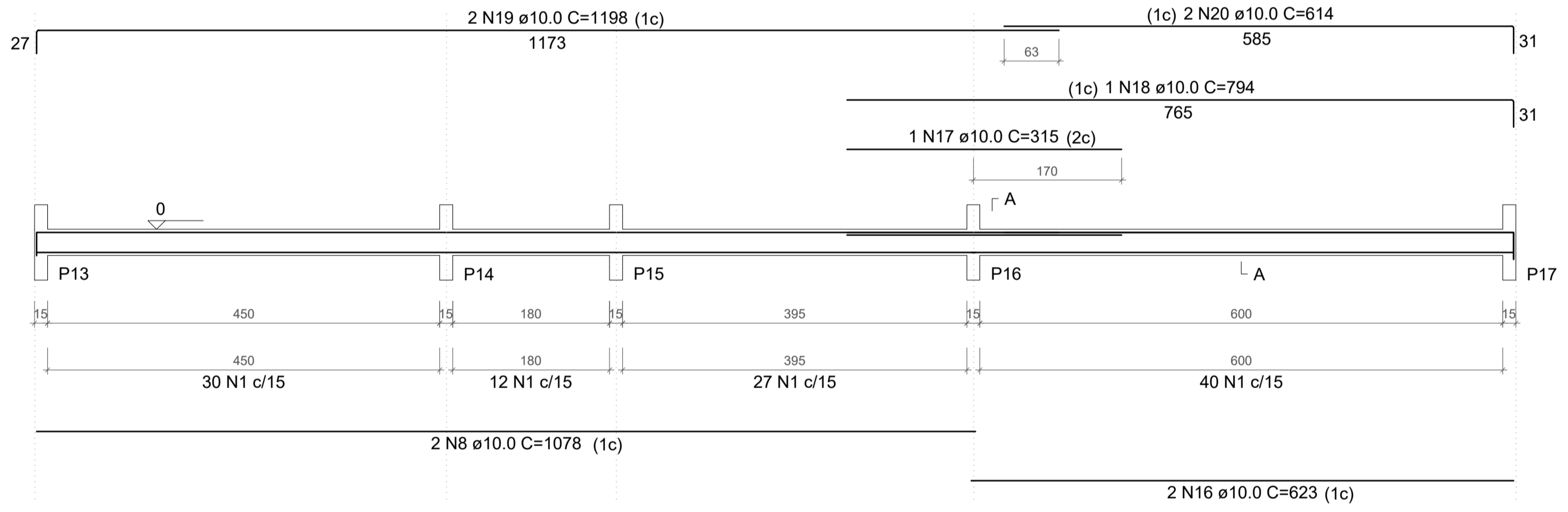


RESUMO DO AÇO

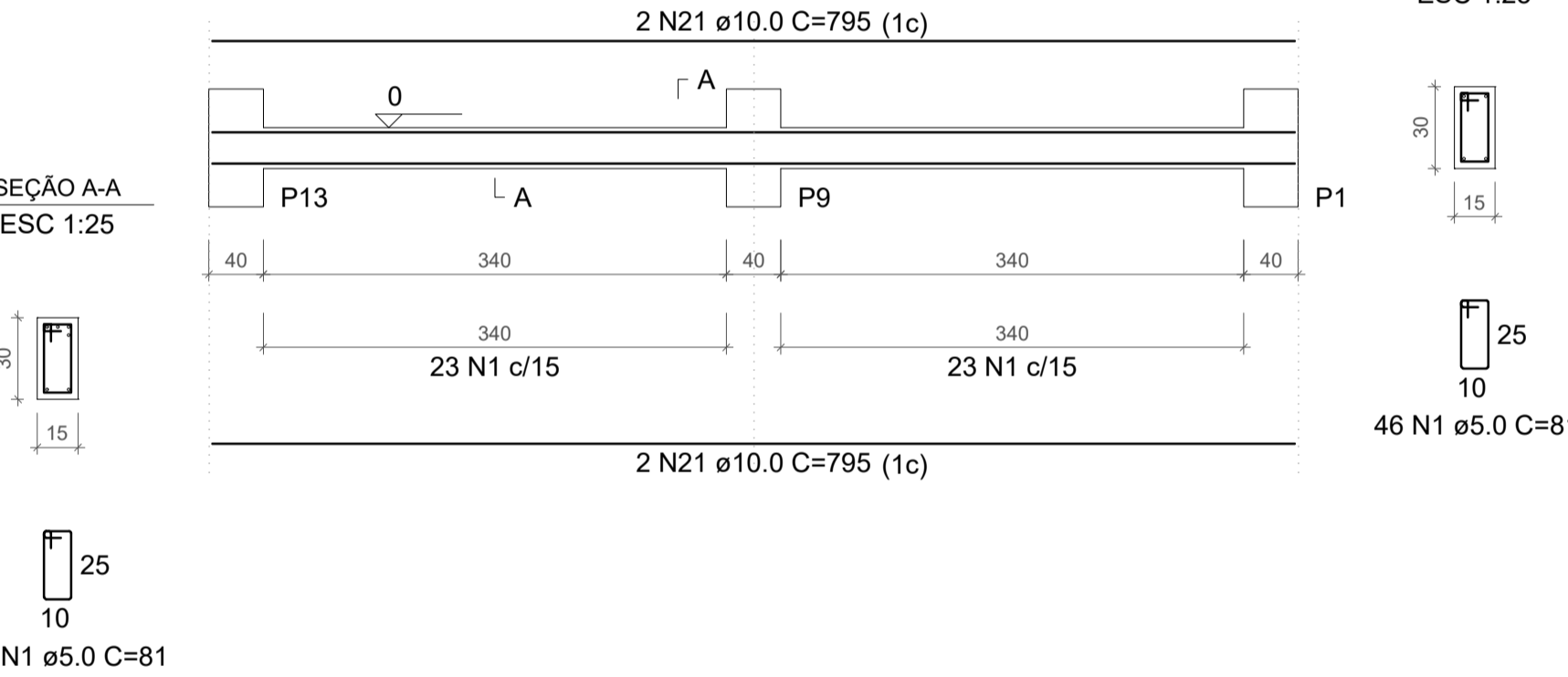
AÇO	DIAM (mm)	C.TOTAL (m)	PESO + 10% (kg)
CA50	8.0	60.9	26.5
CA60	10.0	334.2	226.6
CA60	5.0	462.5	78.4
PESO TOTAL (kg)			
CA50		253.1	
CA60		78.4	

Volume de concreto (C-30) = 3.80 m³
Área de forma = 63.47 m²

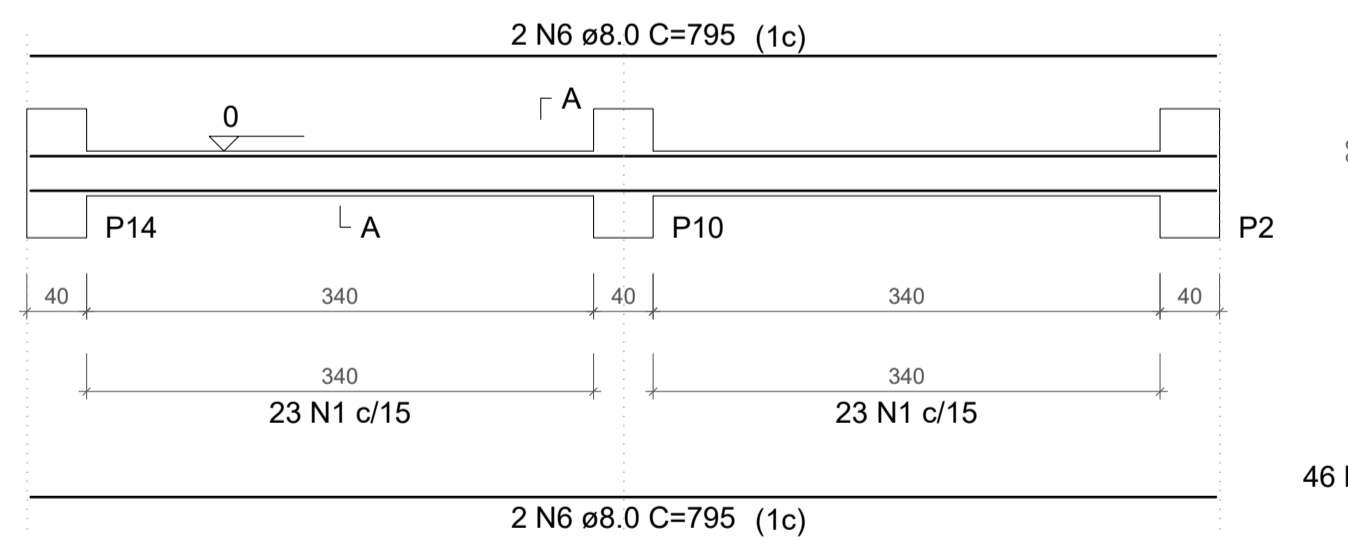
V6
ESC 1:50



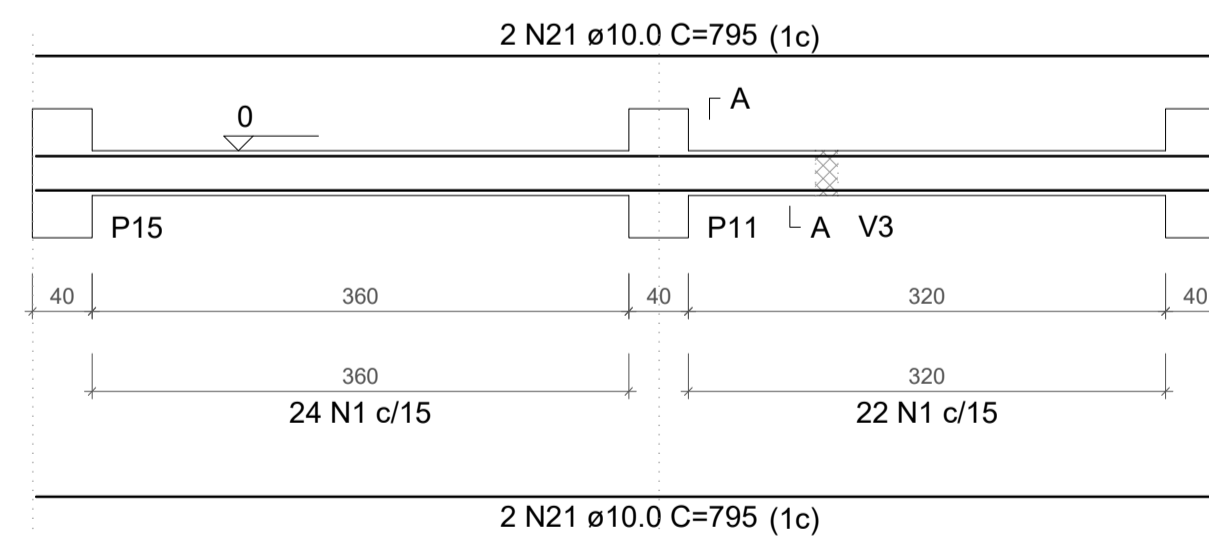
V7
ESC 1:50



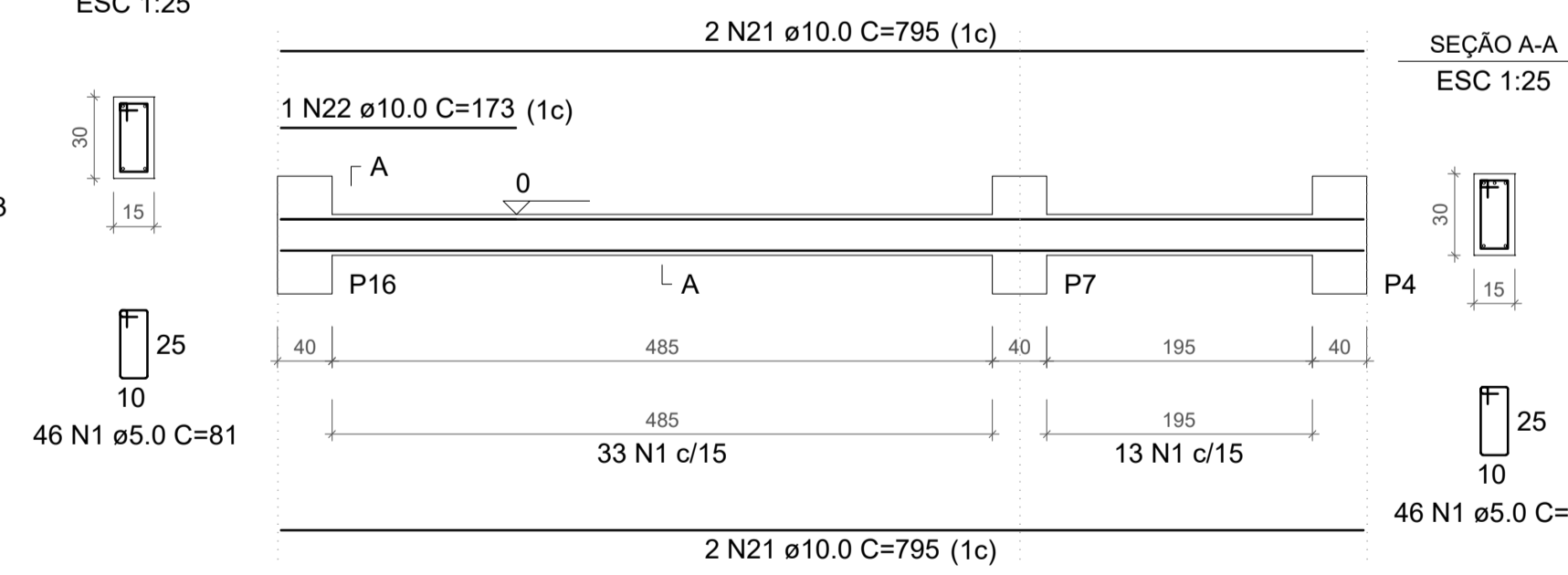
V8
ESC 1:50



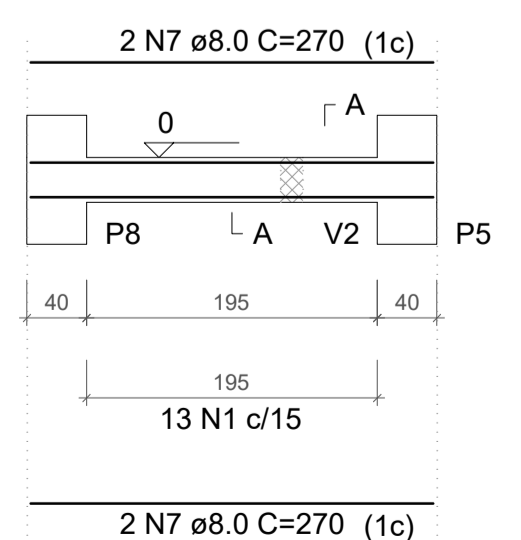
V9
ESC 1:50



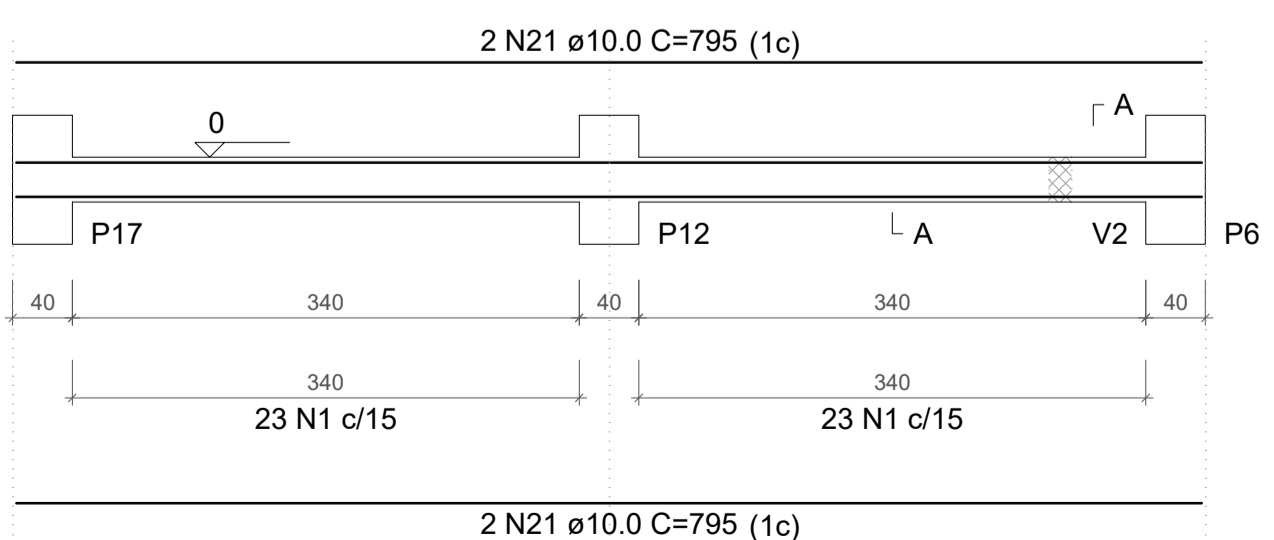
V10
ESC 1:50



V11
ESC 1:50



V12
ESC 1:50



COBRIMENTOS		DADOS:	
Sapatas: 4 cm		Pilares: 2.5 cm	
		Vigas: 2.5 cm	
		Lajes: 2.5 cm	
IMPORTANTE: DEVE SER ADOTADO UM CONTROLE RIGOROSO NA QUALIDADE DOS MATERIAIS EMPREGADOS, E RESPEITANDO FIELMENTE AS MEDIDAS INDICADAS DURANTE A EXECUÇÃO			
REV.	DESCRIÇÃO	DATA	RESPONSÁVEL
00	EMISSÃO INICIAL	05/06/23	ENG. ANDRÉ LUIZ TEIXEIRA
PROJETO ESTRUTURAL			
OBRA: VESTIÁRIO - MUNICÍPIO PRESIDENTE CASTELO BRANCO-SC			
CLIENTE: AMAUC			
ASSUNTO:		PRANCHA	03-04
DET. VIGAS BALDRAME		PRANCHA	REV 00
RESPONSÁVEL TÉCNICO		 	
ENG. CIVIL ANDRÉ LUIZ TEIXEIRA CREA-SC129812-1			

Diretor: Antônio Reisener dos Reis. Lei N.º 519/06